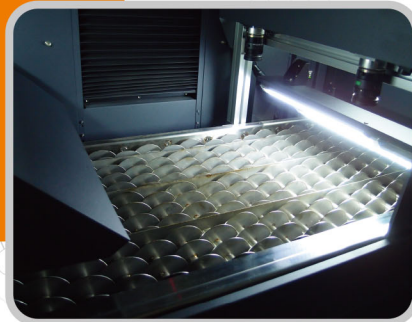


# High Speed Laser Finishing System

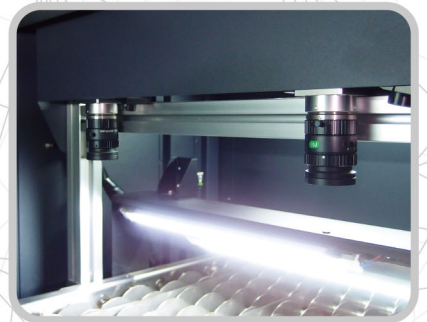
## DFS



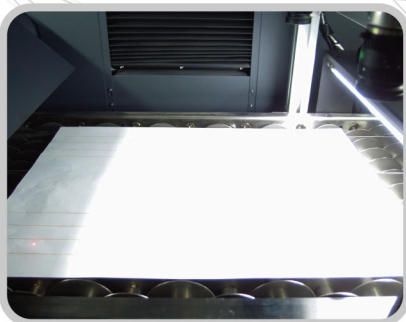
### FEATURES



- Max. Working area up to 300 x 300 mm



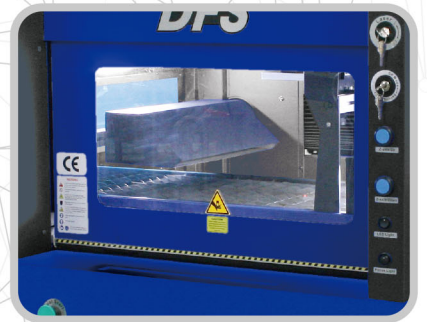
- Two CCD for precise cutting solution



- Max. media size up to B3



- Sturdy and rigid chassis to meet industrial requirement

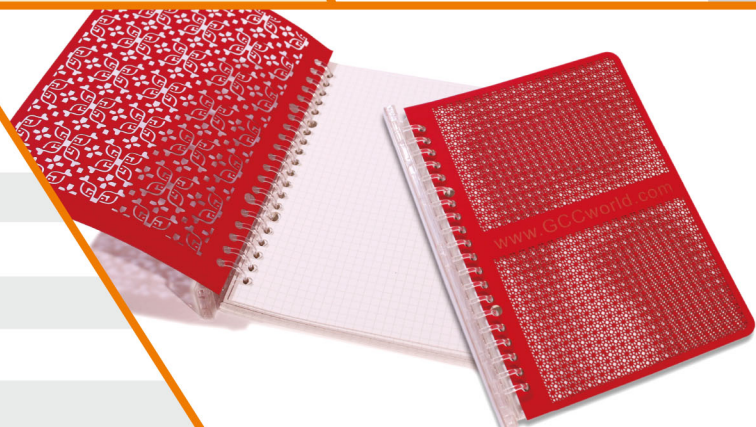


- Large protection window for easy working process monitoring

# DFS



Specification	DFS30-80GT	DFS30-100GT
Field Size of Galvo	300 x 300 mm	
Max. Line Speed	11m/sec (depending on cut lengths)	
Material Thickness	0.15 mm ~ 0.3 mm	
Laser Source	CO2 laser, 10.57-10.63μm wavelength	
Laser Wattage	80W	100W
Cooling	Laser tube Air-cooled / 3-axis cooled	
Media Size	Max. Media size 353 x 500 mm	
Working Area	300 x 300 mm / 300 x 500 mm with conveyor	
Machine Dimension	L1607 x W1403 x H1730 mm	
Conveyor	Standard	
Conveyor Drive	Servo Motor	
Media Loading	Max. 2 kg	
CCD Recognition	CCD x 2	
Compatible Operating Systems	Windows 7/ 8/ 8.1/ 10 (32 & 64Bit)	
Computer Interface	USB 3.0 port x 2 (only support USB 3.0), Ethernet	
Display Panel	Button Base	
Safety	Class 4 Laser Product Compliant with EN60825-1:2007	
Electricity	200-240V AC	
Power Consumption	4500W (Include: Laser and conveyor system)	
Air Exhaust System	External exhaust system is required, one 4" connection on the machine	



\* Speed does not equal to throughput. See dealer or visit [www.GCCworld.com](http://www.GCCworld.com) for more details.  
 Δ Specifications are subject to change without prior notice.



[www.GCCworld.com](http://www.GCCworld.com)



GCC Headquarters	4F-1., No.236, Fude 2nd Rd., Xizhi Dist., New Taipei City 22151, Taiwan	886-2-6616-6692	Fax : 886-2-2694-6875
GCC China	No.1, Chen Feng Road, Yushan, Kunshan, Jiangsu 215300, China	86-512-5726-1515	Fax : 86-512-5726-1518
GCC Europe B.V.	Eglantierbaan 43-45, 2908 LV, Capelle a/d IJssel, The Netherlands	31-10-458-9367	Fax : 31-10-451-9874
GCC America, Inc	20453 E Valley Blvd. Walnut, CA 91789, USA	1-909-718-0248	Fax : 1-909-718-0251
		US & Canada Only	Toll Free: 1-888-284-5211