

**Optional Items**



**Laser Engraver**

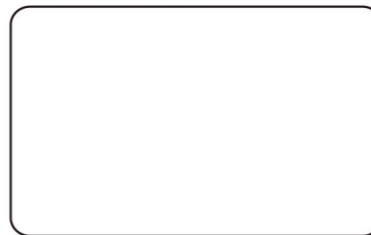
**The Epitome of Excellence**  
**GCC LaserPro Spirit GLS**

The most advanced laser engraver engineered to deliver unrivaled output performance

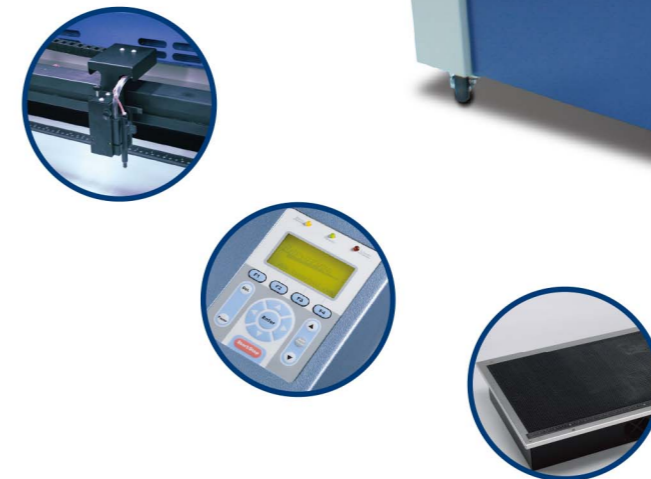
Specification		Spirit GLS
Work Area		34 x 24 in. (860 x 610 mm) Extendable to 38 x 24 in. (960 x 610 mm)
Max. Part Size (W x L x H)	All doors closed	39 x 25 x 7 in. (990 x 635 x 177 mm)
	All doors open	39 x ∞ x 7 in. (990 x ∞ x 177 mm)
Table Size		40.3 x 27.7 in. (1025 x 705 mm)
Dimensions		53.7 x 34.6 x 39.7 in. (1365 x 880 x 1010 mm)
Laser Source		30 to 100W 10.6-µm sealed CO2 Laser / 20W & 60W 9.3-µm sealed CO2 Laser
Cooling		Air-cooled, Operating environment temperature 15° - 30°C (60° - 86°F)
Drive		Closed-loop DC servo control
Maximum Speed*		80 IPS
Speed Control		Adjustable from 0.1-100% (Up to 16 color-linked speed settings per job)
Power Control		Adjustable from 0-100% (Up to 16 color-linked power settings per job)
Engraving Capability		256-level gray scale image processing capability
Distance Accuracy		0.254 mm or 0.1% of move, whichever is greater
Z-Axis Movement		Automatic
Focus Lens		Standard 2.0", optional 1.5", 2.5", & 4.0" available
Resolution (DPI)		Available 125, 250, 300, 380, 500, 600, 760, 1000, 1500
Computer Interface		10 Base-T Ethernet, Full speed 2.0 USB
Compatible Operating Systems		MS Windows
Display Panel		4-line LCD display showing current file name, total working time, laser power, engraving speed, file(s) loaded into memory buffer, setup and diagnostic menus
Safety		Class I Laser Product Compliant with EN60825, Class II Laser Product Compliant with CDRH 2006/42/EC Machinery Directive Compliance Class 4 Laser Product Compliant with CDRH with the optional pass-through door module
Operation Voltage		Laser below 80Watt, 100-240VAC, 50-60Hz Auto Switching, Max. 15A Laser 80Watt and above, 200-240VAC, 50-60Hz, Max. 15A
Fume Extraction System		External exhaust system with minimum flow rate 800m³/h (CFM 471 ft³/h) is required, 2.3kPA negative pressure (Pure-Air PA-1500FS @ 4" exhaust port)

\* Speed does not equal to throughput. See dealer or visit [www.GCCworld.com](http://www.GCCworld.com) for more details.  
 \* The flow rate is determined by a default fume extraction system; the flow rate may vary due to a different fume extraction system.  
 Δ Specifications are subject to change without prior notice.

Authorized Dealer



[www.GCCworld.com](http://www.GCCworld.com)



**Spirit GLS**

- 38" x 24" (960 mm x 610 mm) extra large working area
- QSM (Quality Speed Mode) maintains 100% engraving quality while operating at maximum speed
- Patented SmartACT™ motion control technology increases your productivity by reducing ramping process and job running time
- Drag and engrave feature assures remarkably easy and fast set-ups
- High speed DC motor runs up to 80IPS for precise and rapid movement of the laser carriage
- Reliable DuraGuide motion system with reinforced Kevlar belt delivers superb output quality
- Pass-through front and rear doors to accommodate long working pieces



GCC Headquarters 4F-1, No.236, Fude 2nd Rd., Xizhi Dist., New Taipei City 22151, Taiwan 886-2-6616-6692 Fax : 886-2-2694-6875  
 GCC China No.1, Chen Feng Road, Yushan, Kunshan, Jiangsu 215300, China 86-512-5726-1515 Fax : 86-512-5726-1518  
 GCC Europe B.V. Eglantierbaan 43-45, 2908 LV, Capelle a/d IJssel, The Netherlands 31-10-458-9367 Fax : 31-10-451-9874  
 GCC America, Inc 20453 E Valley Blvd. Walnut, CA 91789, USA 1-909-718-0248 Fax : 1-909-718-0251  
 US & Canada Only Toll Free: 1-888-284-5211



**SmartLID™ (Patented)**  
An innovative lid that opens from both ends allowing easier access for daily maintenance.



Laser Engraver

# GCC LaserPro Spirit GLS



## GCC LaserPro Spirit GLS

The LaserPro Spirit GLS is the flagship model of the award winning LaserPro Spirit line of laser engravers. The Spirit series has received worldwide accolades from the signs and awards industry since its introduction. The Spirit GLS is equipped with sensible upgrades to further boost overall usability.

### DuraGuide

Systematic and reliable motion system embedded with strong mechanical framework, reinforced Kevlar belts, and accurate servomotor control technology to deliver superb output quality under rapid movement.



### SmartLIGHT

LED light modules illuminate the working area showing the progress and details of each job.



### SmartACT™ (Patented)

Ground-breaking technology that reduces the ramping process, the job running time, which translates into higher productivity.



### Easy to Use Control Panel

A control panel with coherent hot-key design and graphic icon displays that allows you to directly change the laser parameter setting, set jobs to repeat unlimited times, queue jobs, delete jobs, and more.



### Pass-through Front and Rear Doors (Optional)

Optional front and rear door design enables loading of extremely long working pieces.



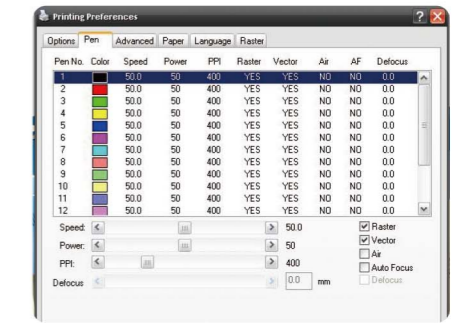
### SmartPIN AutoFocus (Patented)

The plug-and-play probe design makes focusing a one-touch process and provides the accuracy and precision required for optimum quality in the lasing process.



### Key Switch & Emergency Stop

Key switch safeguards the machine from unauthorized use. Prominent emergency button located on the top of the machine allows operators to stop the laser and the motion carriage immediately to provide a safe operating environment.



### Innovative Software Features

Various user friendly features such as SmartCENTER, Defocus by pen, allow users to reduce set up time and make easy adjustments to achieve marvelous output quality.